

December 2023

ENTERPRISE TECH

Brought to you by **GCG Enterprise Solutions**

LET'S TALK
AUTOMATION!

TRACK, MONITOR
& CONTROL YOUR ASSETS
MOJODAT

KYOCERA
ARE SHOWCASING
TASKALFA PRO 15000C

MICROSOFT
Power Platform To The Rescue!

KYOCERA
Technological solutions
for a changing world

RISO'S
Commitment To Air Quality!



ENTERPRISE SOLUTIONS

Business Made Easy

we'll show you how



- 03 **MICROSOFT**
POWER PLATFORM TO THE RESCUE!
- 04 **POWER PLATFORM**
COMPONENTS
- 05 Meet Our EXPERT
WALEED ALAWADI – Microsoft Power Platform
- 07 LET'S TALK
AUTOMATION!
- 08 Meet Our EXPERT
EMAD ABOURA – Software Solution Manager,
GCG Enterprise Solutions
- 11 **SAMSUNG'S AWARD WINNING**
microLED TV
- 12 Meet Our EXPERT
ARCHANA NAIR – GCG's AV Specialist
- 14 **MOJODAT**
TRACK, MONITOR & CONTROL YOUR ASSETS
- 15 Expert DISCUSSION
MURTUZA HUSSAIN – Asset Management
- 18 INTEC extends automated digital die cutting lead with second
generation of **FB8000 PRO** automated flatbed cutter.
- 20 Meet Our EXPERT
KERRY BUTTON
- 22 **KYOCERA**
Technological solutions for a changing world
- 24 High productivity,
LOW RUNNING COSTS
- 25 GCG Enterprise Solutions
to participate at GPP the **KYOCERA**
- 26 **KYOCERA ARE SHOWCASING**
TASKALFA PRO I5000c
- 28 **RISO'S COMMITMENT**
TO AIR QUALITY!

H
Z
E
H
Z
O
C



Microsoft Power Platform

Microsoft Power Platform

One low-code platform that spans Office 365, Dynamics 365, and standalone applications

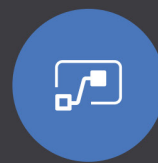
Analyze. Act. Automate.



Power BI
Business analytics



PowerApps
Application development



Flow
Workflow automation



**Data
Connectors**



AI Builder



**Common
Data Service**

MICROSOFT POWER PLATFORM TO THE RESCUE!

Many clients are adopting Microsoft Power Platform to automate business processes and provide a platform for digital transformation in response to unique business problems.

When adequately managed, Power Platform can help solve a range of business problems, small and large, by automating marketing processes, responding to disasters and unforeseen events, simplifying reporting and planning, managing costs, and ensuring the right products are brought to market.

Power Platform's unique abilities enable anyone within an organization to build useful applications using little or no code and provide a common data service across all data assets within an enterprise.

It presents a new era of challenges around data governance, application lifecycle management and organizational compliance which demands a unique approach that only a Centre of Excellence such as GCG Enterprise Solutions can offer.

Now everyone from front-line workers to the CEO can use data to drive your business-value faster.



Analyze

Power BI creates dynamic visualizations from data hosted on internal and external sources.



Act

Power Apps lets you build useful, low-code custom apps.



Automate

Power Automate handles repetitive processes through automated workflows.



Assist

Power Virtual Agents (PVA) gives your customers and employees quick access to information and guidance.

POWER PLATFORM COMPONENTS



POWER BI

GCG will integrate Power BI to help you analyze and visualize the volumes of customer, product, people, and operations information available, past, and present.

Interactive, realtime dashboards - Make informed decisions quickly with information at your fingertips on any device.

AI-driven insights - Less time wrangling data. More time getting answers.

A single, unified platform - Remove the complexity of managing multiple analytics solutions and give every employee access to valuable insights.



POWER APPS

Build and deploy custom business apps that help you act and meet your unique challenges with the low-code/no-code development platform Power Apps.

From Web to Tablet & Mobile - Build and deploy no-code apps with a few clicks across every platform.

Remove development backlogs - Empower your teams to build their own apps without IT's involvement.

Business Unit Collaboration - Business users can start immediately on solving problems, while developers build advanced functionality.

Integrate AI functionality - Develop apps that automate tasks like image classification, forms processing, prediction, and more.



POWER AUTOMATE

Power Automate puts the ability to create automated workflows that run between hundreds of popular apps and services in your hands.

Simple automations to advanced scenarios - Build in branches, loops, and robotic process automation (RPA).

You're always in control - Get notifications, trigger actions, and grant approvals wherever you are.

Integrate AI functionality into workflows - Automate tasks like image classification, forms processing, prediction and more.



POWER VIRTUAL AGENTS

Power Virtual Agents engages AI-based automation to converse with and assist your customers and employees.

A guided, no-code graphical interface - Empower everyone to easily create powerful chatbots.

Realistic feedback - Engage with customers and employees conversationally.

Quick-start integration - Point PVA to your website, and our AI will automatically build topics.

Backend systems connection - Power Platform is capable of utilizing hundreds of connections.

MEET OUR EXPERT

Waleed Alawadi, one of the leading minds supporting our clients' digital journey, shares his thoughts on an advanced business solution – Microsoft Power Platform



GCG Enterprise Solutions has invested heavily in digital transformation and is also an early adopter of automation solutions.

What is Microsoft Power Platform?

Power Platform comprises one of the fastest-growing Microsoft product segments for its capability to deliver fast and cost-effective transformations for business processes.

Built on Azure, the Microsoft Power Platform is a collection of applications that allows organizations to build their own end-to-end business solutions.

Power Platform comprises:

- Power BI - a set of tools for data analysis and visualization.
- Power Automate - a template-based application for building workflows and automating key tasks.
- Power Apps - a no-code/low-code way to build apps.
- Power Virtual Agents - a solution for creating AI-powered chatbots to help your employees and customers.

Together, these solutions allow users to leverage data to analyze, act and automate business processes.

What makes the power platform important? Why are businesses sitting up and taking note?

The no-code/low-code approach gives every company employee (non-developers) the tools to build their own apps, create workflows, and even leverage AI to solve problems.

That means teams no longer have to wait for IT to tackle a new project such as digitizing paper-based processes. They can build a new app to replace an old system, create a Power BI dashboard, or automate project tasks within hours using the Power Platform. Businesses can try out new ideas and iterate quickly whilst extracting more value from their data.

How do I get Microsoft Power Platform? Licensing and pricing?

You can start a free 30-day trial of Power Apps' per-user plan by opening the Power Apps site and then selecting 'Sign up free'. You can then start building mobile apps without writing a single line of code.

For more details about the licensing price you can visit: <https://powerapps.microsoft.com/en-us/pricing/>

Where to start? And what can Power Platform do for our organization?

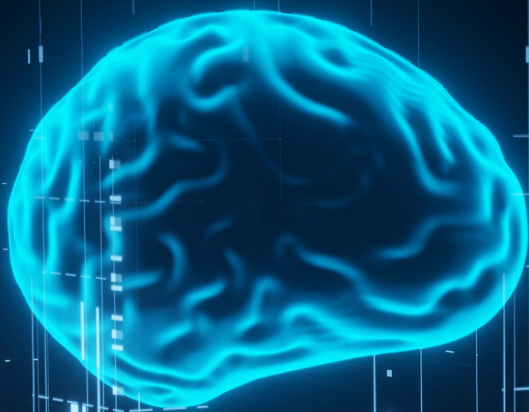
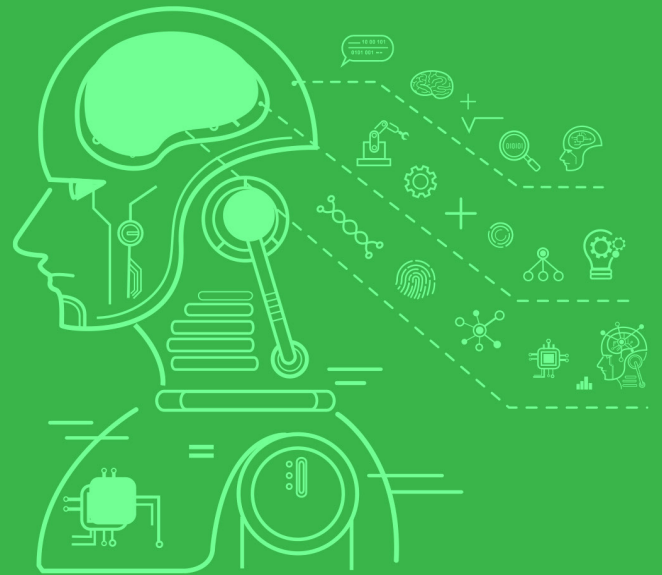
If you want to know more about the solution or discuss your pain points, please get in touch with us. We can provide consultancy, and offer a live demonstration of Power Platform's powerful abilities.

DIGITIZE YOUR WORKFORCE WITH RPA

POWERED BY



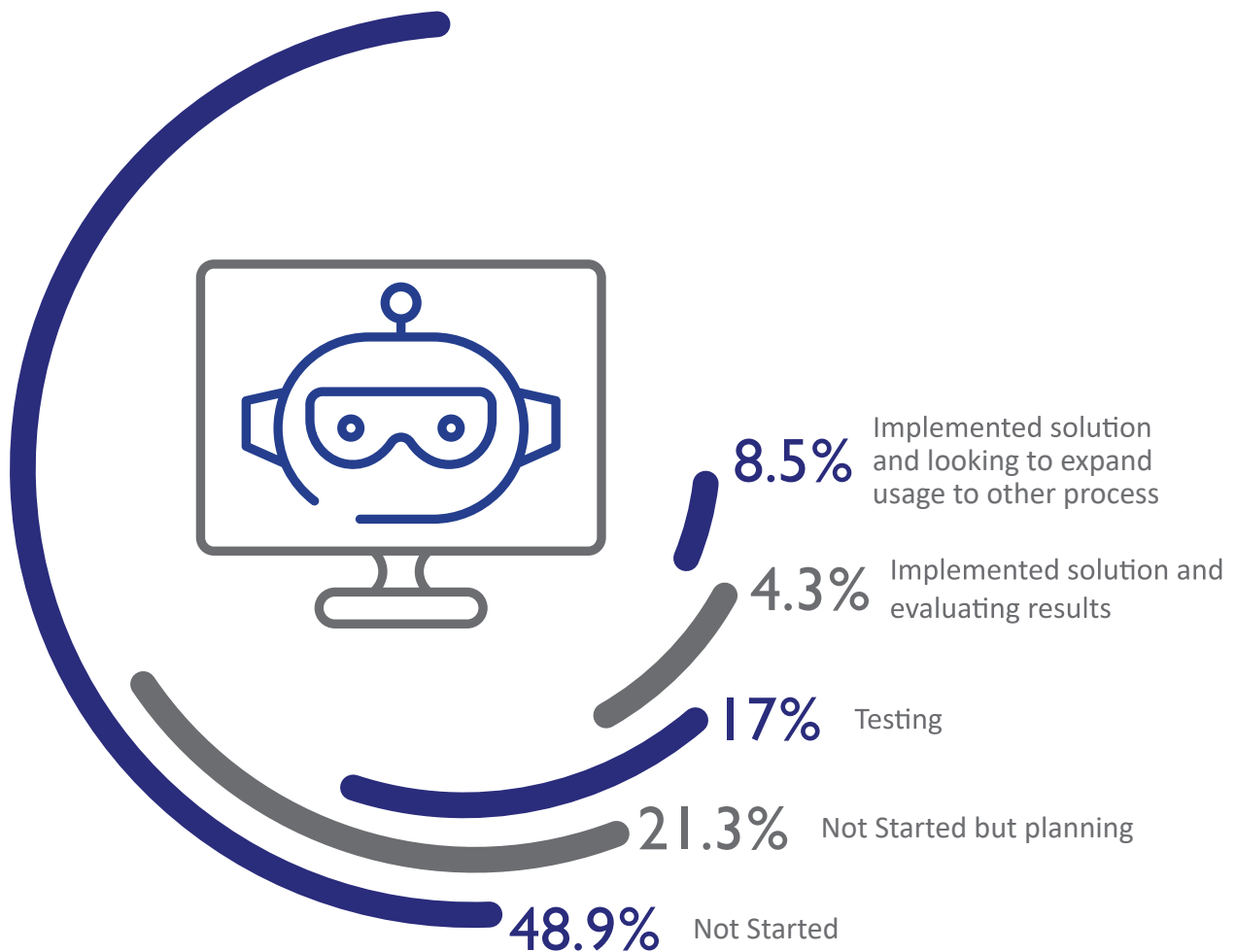
A Ghobash Group Company



LET'S TALK AUTOMATION!

The economic market in the GCC has experienced radical changes since the oil price fall of 2014, which affected many organizations, government entities, and their employees. Several countries in the region took the lead, finding ways to be more efficient, creative and reduce costs in a challenging economy. As a result, disruptive innovations emerged and began to push the public and private sectors to change the way they operated.

Robotic Process Automation was among those operations – a pivotal solution for organizations wishing to drive transformation and exceed customers' expectations while complying with new regulations. The industry's response has been dramatic, with 21% of GCC organizations planning to implement RPA in the coming year, 17% already testing it, and 8.5% having adopted the technology with great success.



Source: Shared Services and Outsourcing Network

BENEFITS

- Improved customer satisfaction
- Cost efficiency
- Governance, quality control, and audit
- Revenue enhancements
- Creation of a digital workforce
- Accurate
- Audit trail
- Increased productivity

MEET OUR EXPERT

Emad Aboura
– Software Solution Manager,
GCG Enterprise Solutions

With an extensive experience in Technology sector and a specialization in Robotic Process Automation, Emad shares with us some insights on RPA technology.



What is robotic process automation, and who can benefit from it?

Robotic Process Automation is a technology that automates routine and repetitive work in any function across the organization. Think of it like a digital workforce of computer robots made up of software that automate your business processes by mimicking the skills and activities of the human workforce. They enable businesses to dramatically reduce operating costs and enhance operational efficiency and compliance by guaranteeing zero error rates – and they never sleep.

So if you can imagine a workforce that executes your processes accurately, multiple times faster than humans and is also available 24/7 throughout the year without being bound by working hours, weekends or vacations - that is the promise of RPA.

Any organization in any given industry can benefit from RPA. Thousands of global organizations and governments already use RPA, and have positively transformed their operations. Processes can be driven by both digital workers and human workers using RPA working in harmony.

It all depends on the organization's objective of its RPA program. For example, some industries focus on cost-savings, other industries focus on customer experience by freeing up their human workforce for more customer interactions. On the other hand, some industries e.g. banking,

use RPA to help adhere to strict regulatory or compliance requirements.

What types of processes are suitable for RPA?

Generally, the most qualified and selected processes for automation are high-volume/frequency and rule-based processes with the associated high cost and human resources.

However, some other criteria make a potential process a better candidate and increase the ROI of automating it.

Well-documented, mature, stable processes with low expectation rates are generally the perfect candidates to achieve quick wins in an RPA program.

Several organizations and businesses want to automate their workflows and processes, but they don't know how to start. So how do you approach and find a suitable solution for clients?

Our role becomes as an automation catalyst for our clients. We help organizations onboard their first digital worker by playing different roles simultaneously, not only as an implementation partner but also as an automation consultant.

The first step is capitalizing on our expertise in

various industries to consult the organization on their RPA strategy in terms of their automation readiness.

We then move together to identify and prioritize potential processes collaboratively based on the organization's objectives and priorities.

Once we have the automation pipeline in place, we start delivering processes according to multiple milestones based on their business priorities to help ease the adoption of the technology and increase the level of RPA maturity within the organization.

Finally, we wear the consultant hat again to help

organizations maximize their benefits of RPA adoption with digital workforce performance and innovation workshops and potentially help the organization to build their own RPA Center of Excellence.

Have you seen increased adoption of RPA lately, and in which sector?

Absolutely! RPA adoption has increased significantly over the past three years, and we have witnessed it ourselves regionally and globally. The sectors with the highest adoption are Banking, Healthcare, Government and Retail. However, for its outstanding benefits, RPA is becoming increasingly popular for all the other industries.

PUTTING TECH TO THE TEST

Testing the solution in the market proved easier than expected. An essential requirement from within Ghobash Group—the group in which GCG Enterprise Solutions operates—offered an opportunity to put the new technology into practice. Ghobash Group central HR needed to reduce time spent on entering business goals for every Business Unit of its operating companies. By implementing the new RPA solution, they reduced total time spent by 50%, a significant result that allowed employees to put greater focus on other essential tasks.



“As GHOBASH Group HR Manager, I am focused in adapting and adopting new transformation technologies to increase employees' efficiency. This year's key highlight was the introduction of RPA as an automation solution for HR which significantly helped us in reducing time for goals entry by 50%. This is a major achievement towards digital transformation in our organization”

Amit Sangha,
Group HR Manager

SAMSUNG

Greatness in any space

Elevate your business with best-in-class picture quality.
Make a memorable first impression in your lobby or shop display,
showcase your brand with an immersive display, or impress clients in your boardroom.
The Wall is the ultimate display solution for enterprises across many sectors.

Boardroom



SAMSUNG'S AWARD WINNING microLED TV

GCG Enterprise Solutions has partnered with the largest AV Solution provider in the world. In fact, GCG has offered Samsung's world-class LED Video Walls for business and VIP's since last year.



Samsung Gulf Electronics has announced that the all-new, award-winning microLED TV has made its first public appearance in the UAE ahead of its official launch in the market. The product, which recently won a 'Best of Innovation' award at the Consumer Electronics Show (CES) 2021, is now on display exclusively at Samsung's official store.

Samsung has been a global pioneer and leader in the TV industry for 15 years. The 110" microLED is the most incredible innovation ever to grace the company's impressive range, representing the latest technology breakthrough that will revolutionize the display industry. The brand is proud to showcase the microLED TV to the public, with the UAE standing alone as the first market in the MENA region where the microLED is being previewed. Therefore, you have a unique opportunity to experience this incomparable innovation before the pre-order phase begins.

The self-illuminating TV will deliver next-level visual quality, using micrometer-sized LED lights to eliminate the backlight and color filters utilized in conventional displays and produce stunning, lifelike colors and accurate brightness from the display's 4K resolution with 8 million pixels. At the same time, cutting-edge audio comes to the forefront of importance.

The TV comes equipped with an AI sound optimizing system that delivers breathtaking 6.2.2 channel sound with no external speaker. Object Tracking Sound Pro identifies objects moving on the screen and projects the sound to follow the action. Furthermore, when the microLED is turned on, users witness immersive experiences thanks to its 99.99% screen-to-body ratio. The black matrix and bezel have been completely removed from the display — leaving only the screen to deliver the most immersive content experience through worldclass design.

MEET OUR EXPERT

Archana Nair
– GCG’s AV Specialist

With much experience in AV solutions and a passion for ICT, she has successfully driven several projects while offering her expertise in key sectors requiring AV solutions.



When we talk about LED video wall, we naturally think of our TV screens at home, but what about commercial solutions?

Basically commercial displays are different from consumer (home) displays as they are designed and manufactured specifically for business and professional usage – so are generally more durable. Our commercial displays vary from standalone digital signage sized from 13” up to 98” to our massive videowalls with slim 0.8mm bezels for a seamless screen as large as your project requires. Large – format Display LEDs and our new ‘microLED’ – with the smallest pixel pitch in the world at 0.8pp – offer better contrast, response times, and energy efficiency. LED cinema screens are also replacing traditional formats for their crystal sharp, backlit images.

For business, remember that today’s computer monitors use higher resolutions to protect an employee’s vision over extended hours of screen focus, and of course content management systems that deliver a complete interactive touch screen solution.

You have been in the AV activity for several years, how do you see it evolving in the region?

Until recently, much of the market depended on standalone digital signage. As the market started evolving it found that digital screens provided an essential, marketable function whether in the hospitality, retail or even healthcare sector and today’s businesses are always on the lookout for the next market showstopper.

The GCC has become a regional hub for tourism and business so there are more malls and trade

centers opening in the Gulf. They all need to display valuable information to visitors so the demand for reliable big-screen technology is increasing.

Technologically, we shifted from LCD screens to LED screens for a better visual experience – they’re also more durable. Previously used only indoors, we see more LED Outdoor Video Walls for outdoor advertising. The costs of these monster displays have fallen so you’ll find a commercial-sized LED “Wall” installed in almost every luxury VIP home in the UAE.

You have been in the AV activity for several years, how do you see it evolving in the region?

Our approach is mainly aligned with our key partner. By listening to our customers we can tailor customized solution to fit their needs. Fortunately, With a broad-category technology and AV partner portfolio, we’re also delivering better quality solutions and installations for our customers.

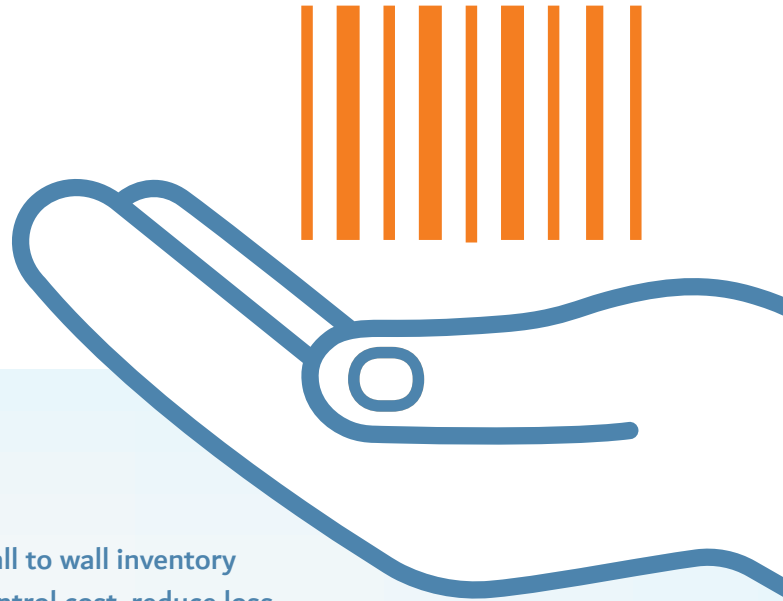
What is your favorite recent signage project with GCG Enterprise Solutions?

Our most recent project, Dubai London Hospital, required indoor and outdoor LEDs, hospitality displays and standalone signage to manage patient and visitor information to the hospital. Our the clients were first class, but because our LED display is on a prime location on Jumeirah Road, it really highlights the huge difference in quality between our product and any other on the market and its HUGE 9x4 meter screen will demand people’s attention.

mojodat

Asset Lifecycle Management Solution

Trusted by hundreds of customers in 15 countries, Mojodat offers innovative and reliable enterprise fixed assets management software to help you run and control the physical assets in your organization.



THE BARCODE ARMY

Our team will study your current fixed assets scheme, conduct gap analysis design new operating procedures, generate asset classification structure, implement asset tagging and barcoding.

- > Wall to wall inventory
- > Control cost, reduce loss
- > Accurate asset register
- > RFID/Barcode technologies
- > Cutting edge mobile app

SOPHISTICATED OPERATIONS, SIMPLE SOFTWARE

Barcoding is only half the battle. You need an asset management software that can do individual asset tracking, manage the financial details of depreciation, maintenance, capitalization and attribution.

- > Manage full asset lifecycle
- > Financial treatment
- > Maintenance module
- > Comprehensive reports, dashboard
- > 3rd party integration (Oracle ERP, SAP, AX, ..)
- > Smart dash board



Mojodat Fixed Assets
Mojodat Maintenance
Mojodat Inventory



Proudly serving clients in Saudi Arabia, UAE, and across the GCC. Check our website at mojodat.transtek.com or email us at mojodat@transtek.com

Mojodat is a product of Transtek Systems.

TRACK, MONITOR & CONTROL YOUR ASSETS

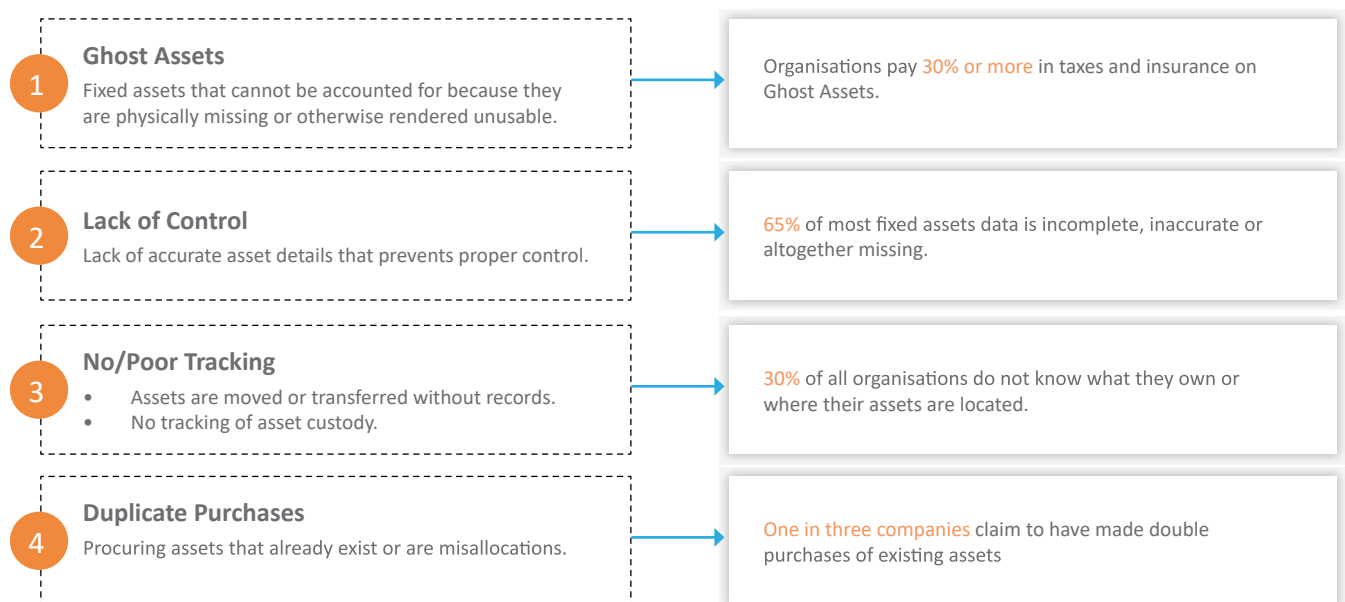
In a world with constant movement and change, companies face significant challenges in tracking the location, quantity, condition, maintenance, and depreciation statuses of their assets.

Fixed asset management is the process of tracking and maintaining an organization's physical assets and equipment. Asset types include vehicles, computers, furniture and machinery. Using an asset management system, organizations can:

- Track and monitor fixed assets
- Improve operational efficiency
- Oversee equipment and machinery in multiple locations
- Maintain a record of retired, sold, stolen or lost assets
- Lower maintenance costs

Fixed asset management enables organizations to monitor equipment and vehicles, assess their condition, and keep them in good working order. This way, they minimize inventory loss, equipment failures, and downtime and improve an asset's lifetime value.

The better and more effectively a company manages its assets, the greater the prospect of maximizing value from these investments. Without fixed asset management, an organization may experience the following:



For companies with extensive inventories, the above results may translate into millions of dollars in lost productivity, repairs, replacement or fines. Beyond immediate costs, substandard equipment can impact the quality of an organization's services or products — in turn, affecting customer satisfaction and business reputation.

According to the ISO 55000 international standard, asset management should maximize value for money. Ideally, fixed asset management improves equipment quality and useful life, thereby ensuring the best return on investment.

EXPERT DISCUSSION

Murtuza Hussain
– Asset Management



Murtuza Hussain's long career in Enterprise solutions is peppered with an auspicious track record of asset management projects. As business development manager of GCG's Enterprise Solutions department, we think he's the perfect man to learn more about this valuable set of business solutions.

It seems several companies don't pay too much attention to managing their assets. That must be due to certain drawbacks?

Sure, but the benefits of an asset management system in place will always trump the hassles, especially when a company like ours can make it so easy. Losing track of your valuable assets is easier the bigger the company is, but any costs involved in a watertight asset management system are actually a money-making process in the long term. Understanding this is the first step to getting it right. The ROI from getting the total value from the extended lifetime of any asset should be a business priority. It simply doesn't make business sense to duplicate Asset Purchases when a smaller investment can mitigate the need to do so early on.

GCG Enterprise Solutions will also design Custody and Cost Centre Management to suit your business most cost-effectively, with a degree of control as agreed upon SLAs.

There are several types of asset tagging; what are the most common ones, and which ones offer the best benefits?

- Asset Tagging using Barcodes / QR Codes
- Asset Tagging using RFID Tags
- Asset Tagging using Sensors

Each of these asset tagging methods is based on use cases and types of assets. The most common

and popular style is using barcode labels. RFID tags are a tracking system that uses radiofrequency to search, identify, track, and communicate with items and people. Essentially, RFID tags are smart labels that can store various information from serial numbers to short descriptions and even data reams. A unique advantage of using RFID Tags is that you can read many tags simultaneously, and they don't necessarily have to be seen as long as they are in the range they can be read.

Is there a specific approach or best practice you would advise organizations willing to start their asset management journey?

With GCG Enterprise Solutions, we first provide advisory and consultancy to support businesses to reach their strategic goals.

We will provide clients with professional resources and help build a seamless asset management strategy for all your physical assets to ensure there is always an accurate record of their position and providence.

Having already implemented many use-cases before, our experience with categorization makes the process easier and faster.

We tailor software designed to track assets and depreciation, so you always have the most accurate, realistic concept of your asset situation.

We'll guide you through the process, but I'll explain to give you an idea of our system. Firstly, we'll conduct a thorough analysis of

your company's requirements to identify any pain points we need to address. Our technologists will then design fitting solutions, which we'll demonstrate to you how it will work. Once you're on board, it is a case of implementation, training your staff if need be and going live with the solution, with audits and reviews from time to time to make sure the investment is holding its value – for our peace of mind and yours.

We hear about the emergence of IoT in asset management. Can you give us more details on the functioning of this technology?

IoT asset tracking involves three key elements: tracking devices, a connectivity method, and software that enables you to manage processes remotely. IoT-enabled asset management uses sensors to read an asset's information, thereby

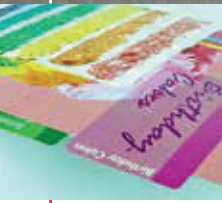
minimizing the need for human involvement. It actively keeps supervising all assets through IoT sensors attached to each asset so an operator can get a complete picture of an asset group in an instant, at any time.

Sensors differ according to the use-case, e.g., sensors containing GPS chips might send coordinates (determined via contact with a GPS satellite) to GPS servers via some wireless network technology, so a pinpoint position is always available. IoT devices with temperature and humidity sensors are instrumental for any business that supplies or transports perishable food products. The device transmits the necessary data to the asset tracking solution whenever the temperature drops out of the required range and countermeasures can be applied immediately to prevent loss.





FB8000PRO Generation 2



Bring short to medium run cutting in-house

VISIT PRODUCT & WATCH VIDEO ON WEBSITE



LOADED WITH NEW ADVANCED FEATURES

ColorCut FB8000PRO is an auto sheet feeding flatbed cutting system, for high-capacity digital cutting production. Perfect for one-offs to 1000s per day - even mixed jobs!

Key features

- Digital die cutter for on-demand cutting
- Dual tool head for cutting, creasing, scoring and perforation - with up to 1kg force
- Auto sheet feeding for high productivity
- High-capacity stacker accepts up to 25kg (2,000 sheets) of printed media
- Pneumatic suction media pick up
- High-speed synchronised feeding
- Continuous belt cutting table
- Driven by ColorCut Pro software
- QR coded Job Library for file retrieval
- Optical camera for accurate registration
- Mixed jobs can be loaded and cut
- Optional ColorCut Pro Server Station



intec
PRINTING SOLUTIONS

www.intecprinters.com | sales@intecprinters.com | +44 (0) 1202 845 960



Intec extends automated digital die cutting lead with second generation of **FB8000 PRO** automated flatbed cutter.

Intec Printing Solutions Limited today announces its newly-innovated, extended FB8000PRO, the second generation of automated digital die cutting systems for print companies and in-plant print operations.



Intec's new FB8000PRO stands out clearly from the competition. Designed in the UK, the second generation of automated digital die cutters offers truly unattended operation with faster production times and increased media flexibility. Building on the shared components from Intec's extensive range of flatbed die-cutting systems, this new FB8000 features a completely remastered auto feed system to deliver world-class results at an unbelievably affordable price!

The new ColorCut FB8000 Generation 2, has evolved by combining innovative technologies with uncompromising design, engineering and construction refinements. FB8000PRO now delivers greater media control and flexibility combined with significantly enhanced productivity, when compared with the previous generation.

The FB8000PRO delivers precision, practicality and productivity to automated, on-demand digital die cutting. Having been well received by print professionals around the globe, the Intec ColorCut FB8000 has been completely remastered to improve upon its already high specification to deliver even faster and more reliable performance enabling customers to meet the tightest deadlines.

New features include:

- New intelligent cutting algorithms enable up to 40% faster performance than the predecessor.
- Refined Auto-Sheet Feeder stacks up to 2,000 / 25kg of printed sheets.
- Quad (4) pneumatic pick up fingers now improved over previous model for wider media handling.
- Separation air blade inclined at an 80° angle with variable 1 – 2 bar air flow delivers improved sheet separation.
- Air pulse knock down working in harmony with the feed table, this new addition provides unparalleled anti-double feed control by firing pulsed air to control stray media.
- Pneumatic control console provides pneumatic assistance features for the adjustment and total control over the pick-up vacuum and the air blade separation flow.
- Touch screen control panel provides a modern expressive front end, delivering visual and comprehensive fingertip control.

- QR code reading Job Library has been enhanced to enable the FB8000 to achieve instant job identification and retrieval of associated cutting file from the ColorCut server's job library for unattended job cutting, plus the ability to scan each and every sheet has also been added, enabling the flexibility for the system to detect if sheets in the feeder contain a variety of jobs, therefore enabling true unattended operation by even accepting a mixed stack of different jobs in the same session!
- SmartMark registration receives a speed boost, improving the speed of scanning registration marks using the onboard Vision 3 CCD video camera to ensure perfect alignment and registration.
- Enhanced media handling enjoy a wider range of media options as well as increased size of 500 x 700mm in manual handling.
- ColorCut Pro3 continually upgraded bespoke software, developed specifically for ColorCut cutting machines.

The new ColorCut FB8000, in a nutshell...

A digital die cutting system enabling printed sheets to be cut and creased using lines drawn-from leading vector graphic design applications. Being digital, sheets can be cut instantly and ondemand, without sending out for dies or to have cutting forms made. Automated functionality enables unattended operation.

The auto sheet feeder enables users to stack up to 25kg of sheets, which are loaded on to the cutting belt using a pneumatic feed system with vacuum pick up fingers and a sophisticated airblade system, to virtually eliminate misfeeds.

The cutter receives the auto fed sheets onto its cutting mat and uses a high-resolution CCD camera to scan registration marks and also read QR codes to identify and automatically retrieve the appropriate cutting file from the ColorCut Pro's remote job library.

The FB8000 can cut and crease a single sheet through a set number of copies to the entire media stack in the feeder. Even coping with a mixed batch of different jobs, each cut accurately, efficiently and reliably.



MEET THE EXPERT

Kerry Button has worked in the graphics supply industry for over 30 years, spending ten years at Canon UK heading up the professional print division. At Intec, Kerry is responsible for all international sales activity and customer support, excluding the Americas and enjoys building strong relationships with the authorized dealers. Intec has developed excellent sales across the Middle East, appointing established and professional dealers like Gulf Commercial Group. Intec continues to expand its range of digital print finishing products and can now be considered one of the world leaders in designing and developing cutting and creasing systems for the graphics market.



Who is INTEC and which products do you offer?

Intec was established over 30 years ago as a distributor of graphic machinery. Over the years, the company has adapted to the customers' requirements and is now a leading digital print finishing systems manufacturer. Our current range provides customers with a complete end-to-end solution from print to embellishment with decorative foils and films. Customers use Intec products to produce a wide range of exciting products, including packaging profiling, wedding stationery, greeting cards, point of sale, labels, presentation boxes, food and cosmetic packaging, business cards, direct mail, party boxes, and more.

What is it in INTEC that we can't find somewhere else?

Intec products are distinctive, which is why we can comfortably compete against much bigger manufacturers. An example of this is our printer's ability to take media up to 450gsm, unique within our price point. Our ColorCut Pro software, which drives our ColorCut devices, is written by Intec and is a plug-in for the industry-leading Adobe Illustrator and Corel DRAW. It means customers are already familiar with the functionality, so little training is required; our competitors often use little-known CAD software, which requires extensive training and may not operate with other well-known design packages. Continuous innovation allows Intec to have a road map of many new products launching over the next 24 months. Our mission is to deliver solutions to our customers that fulfill their current and future needs. Probably the most significant difference is our attention to customer service; we have to try much harder than our larger competitors, so we find ways to ensure

our customers remain delighted with our products. We have developed remote training and support programs during the Covid pandemic, ensuring that Intec customers can continue to provide a high level of service to their customers.

How was your experience in the UAE market?

The UAE is a mature but dynamic market with plenty of innovative companies providing exciting products and services. We have found that working closely with Gulf Commercial Group has allowed us to introduce our product range and reach our target audience. Undoubtedly, the UAE and other GCC countries will play a key role in our continuing expansion and product development.

What are the latest trends in label printing?

Simply shorter runs but lots more of them! This is driven by personalization and versioning, which are the two fastest-growing areas of the label market. Our LC600 high-speed auto-feed sheet label cutter has been a great success because of these applications, and we have seen customers buy additional units to keep up with demand. Globally we are seeing tremendous growth of smaller artisan manufacturers who need short-run labels and bespoke packaging. Currently, there is no sign of this growth slowing down. This is why we recently launched the SC5000 auto feed cutting and creasing system, the first of its kind in the market for those who want to provide bespoke labels and packaging.



All your document needs covered.



TECHNOLOGICAL SOLUTIONS FOR A CHANGING WORLD

The only way to manage change in an ever-evolving world is through new technology. Business concerns about cybersecurity threats are on the rise. Many organisation leaders are struggling to manage numerous devices in hybrid work environments. Others are attempting to contain their document chaos before it explodes. And if that wasn't enough, the pressure to do business sustainably is at an all-time high. This is where Kyocera comes in to give you a helping hand. We have developed a robust series built up of two colour printers and one MFP to help you tackle your biggest printing and document management pains: the MA4500 Series.



Work in finance, law, logistics or any organisation seeking the peace of mind that comes with robust document security.

Scan large volumes documents on a daily basis and require enhanced scanning functions to optimise your workflow.

Print or scan non-standard sized documents such as prescriptions, receipts, delivery slips or banners.

Want to relocate devices according to workstyles changes and would benefit from a slim and compact device.

Demand user-friendly technology that offers easy set-up and maintenance for users of all technical abilities.

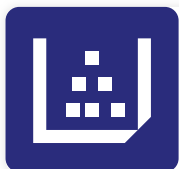


TAKING SECURITY SERIOUSLY

As cyber threats continue to escalate, businesses are proactively boosting their investments and adopting new technologies to effortlessly adhere to the latest laws and regulations.

At Kyocera, we specialise in empowering businesses with **state-of-the-art technological solutions**, fostering secure collaboration among remote teams, and ensuring minimal risk when sharing devices.

Our approach to **enhanced security** comprises a range of features, including:



Trusted Platform Module (TPM)

Encrypts data to ensure that confidential information is stored safely and provides security against threats.



Run-Time Integrity Check (RTIC)

Inspects the authenticity of a firmware extended on the device when it's running.



PDF digital signature

Add a digital signature to a scanned PDF document that makes it difficult to forge or tamper with a document.



Secure Boot

Checks firmware authenticity when a device starts to prevent malicious software from loading.



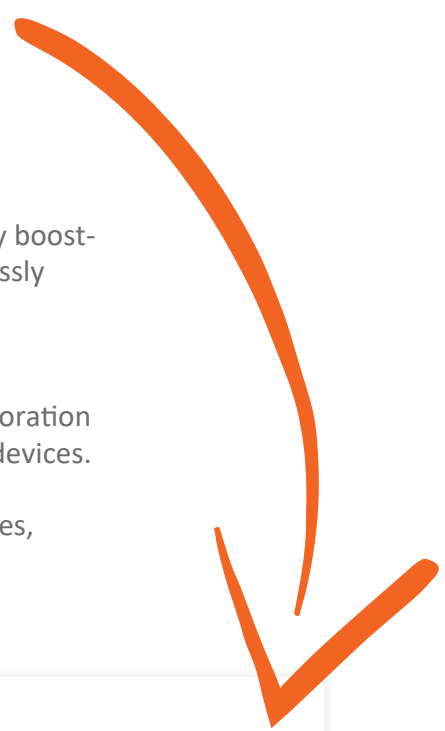
Data Security Kit

Overwriting and data encryption come standard with our devices that users can easily activate in the menu panel.

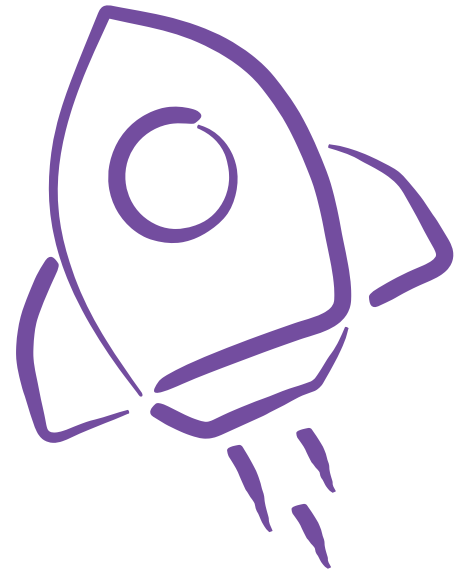


Card authentication

Authenticate print jobs at the device with an ID card to protect sensitive documents from being seen or stolen.



HIGH PRODUCTIVITY, LOW RUNNING COSTS



With Kyocera, your business doesn't need to compromise between costefficiency and productivity – you can achieve both.

Our selection of color devices has been thoughtfully designed to cater to various needs within your business, boosting efficiency while maintaining low running costs.

Hit the ground running

Print your first page in approximately 5.1 seconds or less. Take your costs to an absolute minimum when printing in colour while enjoying flawless results. Power through your tasks with rapid printing speeds. Take advantage of Wi-Fi direct functionality to print conveniently from anywhere. What more do you need?

Sustainability drives efficiency

Equipped with long-life components and eco-friendly toner, our durable devices are in line with the latest environmental standards, helping you to reduce waste and benefit from exceptional levels of reliability. Your costs are further reduced thanks to their low energy consumption that saves your business money on bills.

Speedy document digitisation

If you're looking to go paper-lite in the office, our MFP will help you to efficiently scan and digitise large volumes of documents without interruption. Advanced scanning features such as multiple feed detection, image defect prevention function, and paper jam recovery have been integrated to meet all your digitisation needs.

Work smarter with cloud software

Connect your device to cloud environments or your mobile to increase flexibility and streamline document workflows. Kyocera offers a wide range of cloud and mobile software, from Kyocera Cloud Print Scan, Kyocera Fleet Services to Kyocera Mobile Print. Whichever one you choose; your business will get a significant agility boost!

GCG ENTERPRISE SOLUTIONS TO PARTICIPATE AT GPP WITH KYOCERA

Eyad Nazzal

– Regional Sales Manager,
Production Printing Division,
GCG Enterprise Solutions



Eyad Nazzal, said: “At Gulf Print and Pack 2024, we are looking forward to meeting with our clients who intend to visit the exhibition, in addition to obtaining new clients from visitors to this important exhibition. It will be the first time we will be participating with our strategic partner, Kyocera, at GPP 2024, to showcase the unique capabilities of a unique production printer. Our plans include displaying our most important and newest products during this exhibition, Kyocera TASKalfa Pro 15000c, and we have begun receiving these products in our warehouses. There will be live presentation sessions to directly engage with clients, followed by live demonstrations. We have set a specific area for the presentations to introduce our Kyocera production printer in the best manner possible to clients.

“We are in the process of announcing our new product with our partner Kyocera in the Middle East. Everyone now is familiar with the Taskalfa Pro 15000c machine, an InkJet machine is one of the lowest operating costs and most productive machines in the printing world. We are not stopping there with our partner Kyocera, our portfolio will get bigger! stay tuned for

another Kyocera production printer in 2024, a one-of-a-kind printing technology. At this stage, InkJet printing machines constitute a means that is growing and developing significantly for its role in reducing production costs, competing in printing speed, and meeting customer needs.

He concludes, “in the coming year, we have several development plans in the fields of printing due to the diversity of products under the umbrella of our company, in addition to our focus on artificial intelligence and the programs that the market needs in various sectors. Our company is distinguished by the fact that it contains in its portfolio integrated solutions for any sector in this market, whether software or hardware solutions.”



9 - 11 January • Dubai
**GULF PRINT
& PACK 2024**
www.gulfprintpack.com

TASKalfa Pro 15000c

The New Revolution



GCG Enterprise Solutions & Kyocera are showcasing the latest inkjet production printer in the region with demos and presentations.

Vist us:

9 to 11th January

Stand G13

DWTC Sheikh Saeed Hall 1

PRESENTATION TIMING:

EVERYDAY AT

11:00 to 11:30

14:30 to 15:00



**ENTERPRISE
SOLUTIONS**



KYOCERA



GET INVOLVED WITH RISO TO PRESERVE **AIR QUALITY**



Discover our unique **COLD INKJET TECHNOLOGY**



- › AIR QUALITY PRESERVED
- › ENVIRONMENT SUSTAINABILITY
- › HIGH PRODUCTIVITY
- › RELIABILITY



Scan to view RISO's
commitment to preserving
your working environment



RISO'S COMMITMENT TO AIR QUALITY!

Air quality is a key issue! Many sources of pollutants have direct and indirect impacts on the environment and our health. The health crisis that is affecting us is disrupting our daily lives and today, more than ever, the health and well-being of all is a priority.

«Good ozone» protects us from the sun's rays. «Bad ozone», mainly the result of poorly planned human activity on our planet, is harmful to health. Like fine particles, it easily penetrates the breathing system. VOCs (volatile organic compounds) are a group of many substances. They are characterized by their high volatility and spread easily in the atmosphere, into our homes and workplaces, leading to a double effect on health: a) an indirect effect by acting on ozone (several of these compounds participate in the photochemical reactions responsible for the formation of tropospheric ozone) and b) a direct effect as a toxic substance for some of the most harmful VOCs



Zero ozone emissions



Healthy environment



Less VOCs



Did you know that copiers or laser printers are a source of exposure to these pollutants? This is because toner-based «laser» technologies use heat to fix the toner to the paper. As they heat up, traditional laser printing systems emit harmful substances. With RISO solutions, users work in a healthy environment and working comfort is preserved. RISO's research and development teams design and manufacture products to minimize the environmental footprint and air pollution. Thanks to the FORCEJET™ cold printing process, RISO inkjet solutions do not emit ozone. The inks developed by RISO are based on nonvolatile oil with low impurities and each component of the printer is designed to select only materials with low VOC emissions.

FEATURED PARTNERS



SAMSUNG

mojodat

intec
PRINTING SOLUTIONS

 **KYOCERA**

 **RISO**
PRODUCTIVE PRINTING



Business Made Easy

we'll show you how

ABU DHABI OFFICE

T : +971 04-528 1000,
PO BOX: 47257,
12th Floor, Madinat
Zayed Tower, Sultan Bin
Zayed the First Street,
Abu Dhabi, UAE

DUBAI OFFICE

T : +971 04-528 1000,
F : +971 4 239 4566,
PO BOX: 1017,
Makeen Building, Airport
Road, Dubai, UAE

MUSCAT OFFICE

T : +968 2 411 1500,
F : +968 2 411 1500,
PO BOX: 1718,
PC 130 Azaibha Pearl Tower,
Muscat, Oman

RIYADH OFFICE

T : +966 55 868 2818,
F : +966 11 473 4521,
Riyadh-Al Sulimaniah
Prince Mamdoh Bin Abdul
Aziz Street, Al Safwah Trading
Center Office No. 72

www.gcg.ae | info@gcg.ae

