

# ENTERPRISE TECH

Brought to you by GCG Enterprise Solutions

## TEAMS DOCUMENTATION DONE RIGHT

With Titan Workspace  
to the Rescue!

## The Hybrid Workspace in a New Era

## PERFECTING THE ERP SYSTEM

With Additional Fixed  
Asset Management

## MICRO & MINI DATA CENTERS OFFER BIG GAME PUNCH

## THE EVOLUTION OF THE DIGITAL WORKSPACE

We talk to GCG's  
Hassan Allaham

## INTRODUCING MOJODAT SYSTEMS

Is this the future of RFID?

## PRINTERS CAN SAY "YES"

The Proof is in the KODAK



# ENTERPRISE SOLUTIONS

Business Made Easy

---

*we'll show you how*



- 05 Introducing Titan Workspace
- 06 Gaurav Bhutani the Titan Man
- 08 Hassan Allaham Talks Digital Office Solutions
- 10 Micro And Mini Data Centers
- 11 Datwyler Data Centers Introduction by Asem Shadid
- 13 Khaled Talks Smart Building Services
- 15 KODAK NEXFINITY Digital Press
- 17 Interview with Randy
- 20 Shortages in the ERP System
- 22 Interview with Husam
- 23 Featured Partners

# TITAN ZONE CON



# Simplifying Document Security, Compliance and Collaboration within Microsoft Teams

 Titan **Workspace**



**Document Management**



**Guest User Portal**



**Intranet**



**Project & Task**

## Keep Your Workforce Secure & Connected in Microsoft Teams

# TITAN WORKSPACE

Titan Workspace is a digital workplace solution that secures and connects your workforce in Microsoft Teams. Titan Workspace enables teams to leverage the best of SharePoint and Office365 capabilities. Microsoft is the market leader in workplace collaboration and Titan Workspace takes their products' power to the next level. Titan Workspace integrates with your Microsoft solution to boost employee engagement and productivity while also securing your documents and users. It helps you mitigate the risk associated with confidential data by simplifying document security and governance.



Titan Workspace is the flagship product of TFW Labs, which has its corporate headquarters in the USA. It is one of the fastest-growing modern workplace solutions with customers in the global healthcare, pharmaceuticals, cement, fintech, consulting, and automobile sectors. Titan Workspace is a Microsoft Co-Sell Ready partner and is now being promoted by leading Microsoft CSPs and MSPs globally.

## **Titan Workspace comes with a feature-rich portal:**

**Document Management:** Quickly roll out document management features of Office 365 and simplify your users' SharePoint experience. 24/7 secure access and sharing of documents with real-time tracking. Document search and e-signatures are powerful features that allow you to save up to 80% of your unproductive time previously spent finding the right document and relevant information while mitigating concerns with compliance.

**Intranet:** Our feature-rich Intranet gives your employees a range of productivity tools to collaborate and easily manage content. It consolidates performance management,

recognition, and rewards — including goals, feedback, conversations, surveys and the learning center — into a single, simple-to-use platform.

**Guest User Portal:** Set up a dedicated portal for your external users, including vendors, partners, subcontractors, customers, and more. You'll be able to collaborate with them on projects and documents without risking a security breach from an unwanted party.

**Project & Task:** Your employees will benefit from an intuitive project management system, the use of which requires no training. Track a project's progress with a user-friendly project management tool and single repository for documents.

**Timesheets:** If your employees are geo-dispersed, you'll be able to track their productivity and workload through our timesheet function that generates reports for HR and gives you visibility into employee activity.

**Analytics:** Out-of-box Office365 analytics aren't easy to use or comprehensive, so Titan Workspace consolidates your data to enable you to monitor the usage and adoption of your tools and provide an analysis of both web and mobile usage.

# INTERVIEW WITH GAURAV



Associate Vice President of Sales at Titan Workspace, Gaurav Bhutani has 12+ years of experience with managing client accounts in the Enterprise segment.

**He is skilled in building sales strategies, preparing teams to introduce new concepts to markets, and selling SaaS solutions to change clients' buying habits in traditional markets.**

**We asked Gaurav how Titan contributes to the hybrid workplace in the current digital era:**

Our workplaces were irrevocably altered by the pandemic. Modern styles of employment, such as the hybrid workplace are gaining traction. Employment models such as on-site and remote work have taken on new meanings but at the end of it all one thing has remained the same: the work! To accomplish our work goals as successfully in these new paradigms, we need an open and secure hybrid environment to maintain productivity without disruption.

Titan Workspace improves the effectiveness of your modern workforce with more efficient collaboration tools. Because most, if not all employees work from home, the organization needs a uniform collaboration and communication system.

IT plays a significant role in simplifying hybrid working, and Titan Workspace makes IT's job easier by managing all sources of document security. Titan Workspace inherits the Microsoft Platform's level of security and is future-proof because the platform is based on a single source;

you will not have to worry about losing your documents if you ever need to switch to another device. Titan Workspace's enhanced security mechanisms include restricted permissions, document sharing, and editing.

Titan Workspace is attuned to the needs of the future of work and offers an unparalleled portfolio of hybrid workplace management capabilities. Titan's mobile app is the most powerful business app out there, and it works with any mobile device so you can track and communicate with your team in real time.

**How does an "employee experience platform" empower a company?**

Employee experience is entering a new era. The trend towards more humane work practices has accelerated in the post-COVID-19 work period. As a result, businesses are increasingly seeking straightforward solutions that encompass the entire workforce.

Titan Workspace is committed to bringing together all the tools necessary to improve work for everyone including the HR function of an enterprise as it consolidates performance



management, recognition, and rewards. The system makes it really easy to manage goal setting and tracking, employee and managerial feedback, recorded conversations, surveys, and the learning center all made available on a single, simple-to-use platform.

Employee retention is another of the more pressing concerns confronting organizations. Titan Workspace assists HR in focusing on employee satisfaction, allowing them to identify and prevent problems before they become more serious. Building and maintaining a successful team today is difficult, but Titan can help by connecting team members with one another, fostering cross-team collaboration, and minimizing 'busy' work because you gain better insight into projects and tasks.

### **How will MS Teams' users benefit from Titan Workspace?**

Titan Workspace is a fully integrated app within MS teams. Customers find it extremely difficult to use SharePoint within Office365 and Teams unless they are tech-savvy. As a result, M365 adoption rates are often lower than expected. Titan Workspace has simplified M365's collaboration capabilities covering documents, approvals, e-signatures, guest user management,

projects and intranet, thereby helping all customers to securely manage their documents and information within Teams. Titan Workspace integration with Office 365 has made it simpler for customers to create and manage their Office 365 Drive. It has also provided easier access to other OneDrive for Business and SharePoint sites.

### **What pain points does Titan Workspace resolve for a business user?**

Business users might often find maintaining all documents in a single location to be a challenge. Using Titan Workspace, any document can be safely stored and accessed from a single location.

Using Titan Workspace, business users can also simply apply security to documents so it's no longer an issue when sharing documents with easy-to-apply restricted access readily available.

Titan Workspace's Guest-User Portal allows you to effortlessly share files, set tasks, and communicate in the safest way possible as it tackles the problem of secure communication and document sharing with external users. Then, document approvals and sign-offs within teams is made even easier with the wonderful feature of eSignature, where users can sign and track acceptance in compliant confidence.



# **Easily apply Security on Teams and channel files**

DESIGNED FOR

 Microsoft 365

 Microsoft Teams

# MEET HASSAN

With more than 10 years at GCG, Hassan Allaham has played a major role in driving the company's success in printing and MDS.

**Now, Hassan is responsible for digital office solutions and gives us his opinion on office business solutions.**

**Tell us a little bit about the latest office business solutions offered by GCG?**

We're always in an exciting state of transition at GCG. The OBS division is consistently hard at work improving our total solutions offering to local and regional markets, thereby contributing to digital transformation and enhancing the digital workplace experience for our clients. We started with the modern workplace focusing on essential solutions, then perfected Microsoft's products & license portfolio with added value, and have pushed the boundaries of the digital work environment (Enterprise Room Booking & Visitor Management Platform). We extended our print and document solutions portfolio by adding document scanning workflow that integrates with our existing print and DMS solutions and developed the first SaaS cloud-based printing solutions. Our latest, most focused segment (Digital Workplace) has taken wings with a partnership with the Titan Workspace digital workplace platform and WORKELEVATE's – Digital Workplace Service Automation Platform for IT and HR operations.

**What pushed GCG to enrich its portfolio with office business solutions?**

GCG has an almost aggressive stance on digital transformation because it works well for our clients. We started specifically with internal transformation to extend our total solutions offering and adjust to market needs. Considering the organic growth for these solutions in our business sector, we identified huge potential for offering digital office solutions that contribute to the digital office experience and hybrid work



environment. From the strong partnerships we built during previous stages we are able to offer unique added-value solutions.

**How do you see adoption and transformation across the region?**

COVID-19 pushed companies over a technological tipping point, transforming business forever. The UAE in particular had expedited the transformation process even before the pandemic hit, which contributed significantly to digitally-enhanced government services. While the move was intended for the substantial needs of the government sector then, today digital transformation is meeting the needs of SMEs as well, as markets drive the demand for cost savings, modernization and streamlined business processes.

**What is your vision on transitioning from SLA to XLA?**

The rapid transformation of the digital workplace comes with new levels of complexity and SLAs and traditional surveys are simply not enough. By listening to end-users to understand the quality of their digital experiences we're better able to manage this complexity. Experience Level Agreements that focus on the impact of SLA metrics allow companies to identify and rethink areas to make the end-user experience easier, and finally meet their satisfaction expectations. Where SLA metrics indicated straight productivity, we can now measure factors that enhance performance more accurately. In other words, not just doing, but doing well.





**DATWYLER**

# **SUCCESSFUL DIGITALIZATION**

**STARTS WITH DATWYLER'S PIONEERING  
IT INFRASTRUCTURE**

[ITinfra.datwyler.com](http://ITinfra.datwyler.com)

# MICRO AND MINI DATA CENTRES

## CUTTING EDGE SOLUTIONS FOR SMALL AND DECENTRALIZED DATA CENTERS

Anyone wanting to benefit from the opportunities provided by digitization needs intelligent IT infrastructures equipped to cope with its dynamic growth. Examples of these are Datwyler Micro and Mini Data Centers.

IoT, automation, 5G, robotics and artificial intelligence are enabling many new applications and business models. At the same time, these resources generate huge amounts of data, which needs to be processed near sources and users to reduce latency.

Datwyler has developed the Micro Data Centre (MDC) for applications like these. In a single rack they provide a preassembled IT infrastructure which, among other things, covers power distribution, UPS, a climate and security monitoring system, and an (optional) cooling and fire extinguishing system. In an enclosed or passively ventilated version, an MDC is also

suitable as a complete server rack solution for small firms.

For small data centers, Datwyler's Mini Data Centers are preassembled state-of-the-art plug-and-play IT infrastructure solutions. As well as the equipment rack with integrated power distribution, UPS and a monitoring system, they comprise an in-row cooling system and up to seven additional racks for the user. They are suitable for small data centers and cutting-edge computing applications. Every Micro and Mini Data Centre from Datwyler is a customized solution, tailored to meet the customer's specific needs and requirements. The Mini Data Centers provide multiple configurations for power supply and cooling redundancy, thus allowing cost-effective migration to future technologies. The solutions can be operational within a few hours (MDC) or a few days.



# MEET ASEM SHADID



Asem Shadid, Managing Director of Datwyler Middle East and Africa since 2015, successfully led the implementation of the company strategy and business transformation in the region.

Asem is a member of the corporate leadership team of Datwyler and successfully led the implementation of the company strategy and business transformation in the region from cabling solutions into IT infrastructure solutions provider. Together with the Middle East team, Asem managed to keep the profitable growth of the company and thrive to pursue new innovation-driven opportunities in the region.

Before joining Datwyler, Asem worked with various companies in the Middle East and developed various IT infrastructure business in different applications such as airports, hotels, hospitals, data centres, etc.

## **Can you introduce Datwyler?**

The Datwyler Group of Companies, headquartered in Altdorf, Switzerland has 25 owned offices and plants all over the world. The Group has an 8,000-strong workforce and generates an annual turnover of 1.3 Billion Swiss Francs.

For over a century Datwyler has led the innovation and manufacture of cabling systems. Today Datwyler has evolved as a think tank, providing IT infrastructure solutions comprising

software and services for Data Centres, Fibre Networks and Intelligent Buildings. With comprehensive and reliable one-stop package solutions, Datwyler is establishing a backbone for real-time communication between people, machines and organisations and is laying the groundwork for society's digital future.

Datwyler acts as a professional partner and consultant, evaluating, developing and implementing the IT infrastructure of organisations on their way to successful digitisation. This gives customers access to cutting-edge technology and a solution that is perfectly tailored to their particular requirements and, which also responds flexibly to the strong dynamic of future technological demands.

## **What are the advantages of smart modular data centers?**

Datwyler provides high-quality, secure and smart modular data centres that are fully preassembled plug-and-play IT infrastructure solutions, each of which is tailored to specific customers' requirements. The solutions consist of IT racks, a smart power module, cooling, intelligent power distribution, uninterruptible power supply and an environmental monitoring system. This smart modular data centre is fully integrated, monitored and controlled locally and remotely and it can be deployed faster. It even has a low carbon footprint. It also allows various configurations for power supply and cooling redundancy to meet all the organization's current and future

*(read over page)*



demands in a cost-effective way. They are environmentally friendly and can reduce power consumption with 1.3 power usage efficiency.

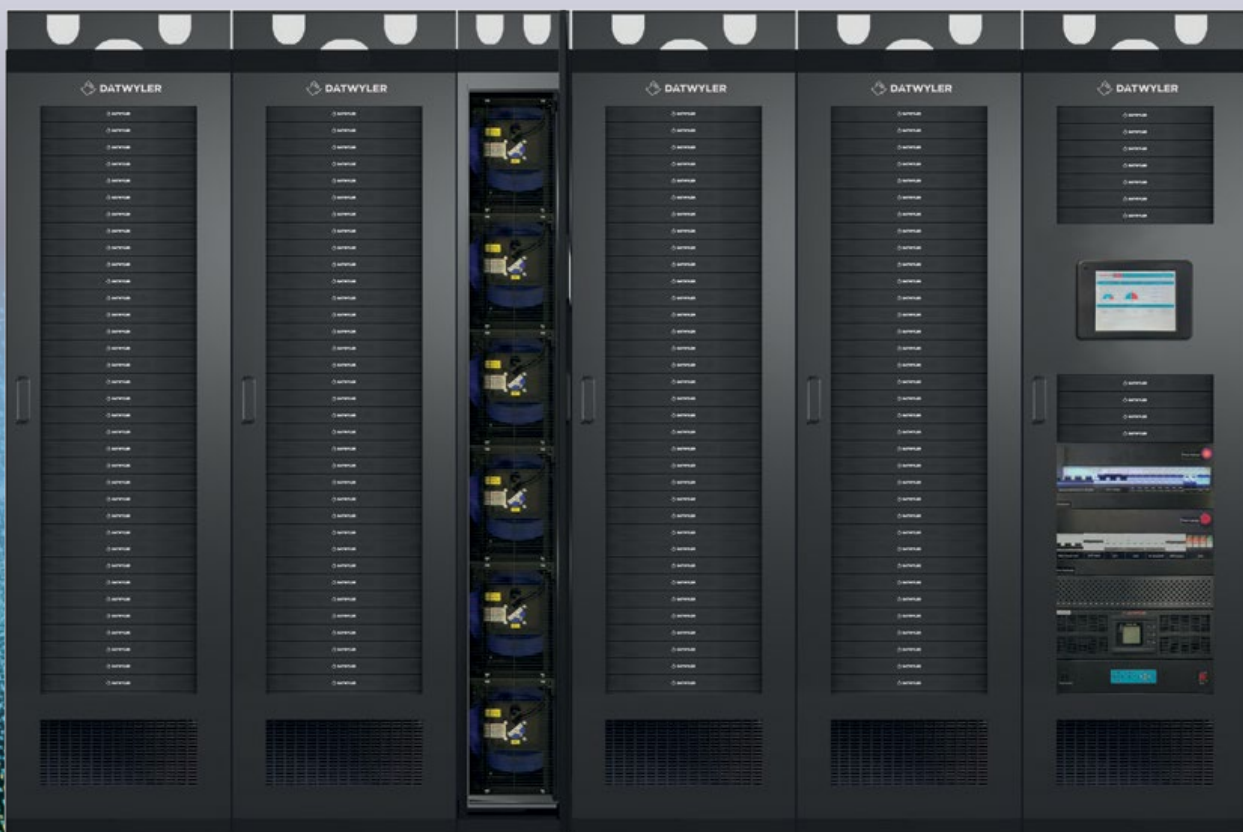
### **What are the future trends in IT infrastructure for the region?**

Major trends such as automation, 5G, the Internet of Things and artificial intelligence are evolving everywhere, and they all have one thing in common - the amount of data being produced and processed continues to grow exponentially. In order to take full advantage of the opportunities provided by digitisation it is essential to have IT infrastructures equipped to cope with this dynamic era. The demand for small – medium scale data centres located close to the users and things to reduce latency are inevitably increasing. The availability of monitoring software and maintenance services would be a great added value. People nowadays are also adopting smart solutions hence, having smart modular data centres are set to be vital for the organizations' sustainability strategy.

Datwyler focuses on continuous innovation and develops dependable, future-proof solutions that will help organizations stay at the forefront of digital society.

### **How do you see the new relationship with GCG as a channel partner and Datwyler as an IT infrastructure solutions provider working together to benefit the customers in UAE?**

This partnership will be a significant factor in expanding our offering to delivering holistic IT infrastructure solutions for multi-site, campus networks, smart factories, etc. which also leads to stronger value-added services to many customers in the United Arab Emirates. No doubt, having a comprehensive end-to-end solution will surely benefit customers in terms of obtaining cost-effective solutions, easier communication between all interested parties and quicker project turnaround. Datwyler along with GCG will continue to be the trusted advisor in continuing development of the customer's IT infrastructure.



# MEET KHALED

With much expertise in smart systems, Khaled is the new division head of GCG Smart Building Solutions and is taking the lead in building a strong portfolio to tailor bespoke solutions for clients in the region.

He has 18 years' experience in UAE. He started out his career with only three systems as a sales expert. Today, Khaled can provide top-level advice on eighteen systems and has built a deep expertise in ELV, ICT, and AV to provide the most suitable turnkey solutions for buildings and facilities.

**GCG now is embarking in an exciting journey. Can you expand on the portfolio you'll be working with?**

GCG will provide a wide range of solutions and systems (highest, smartest and latest), helping our clients enhance their businesses and facilitate security and workflow within their buildings and greater operations. We will focus on 3 key categories: ELV, ICT, and AV.

All of these categories will enable our clients to get the best out of the latest technologies.

**How do you see the market growing for Smart Building Solutions in the region?**

Our market definitely took an economic hit during the pandemic, which had a significant effect on



the region from a project perspective, also with the supply of imported equipment. Now things are starting to pick up and in my opinion, UAE is seeing a major growth compared to other countries in the region post pandemic. I am very optimistic in the way UAE has handled the crisis, and I can see many opportunities, not only for new buildings, but even enhancing existing facilities with the latest smart solutions.

**Talking of trends, what are the latest ones in Smart Building Solutions?**

The trend at the moment is on cloud solutions, which enable users to operate hardware efficiently and cost effectively. In the past, most systems were operated on-site – individually – instead of cloud. The changing video surveillance industry will use Video API platform, which is a secure open platform that provides the flexibility and scalability to meet any client's requirement.

There is also a major focus on AI right now to reduce human interaction and involvement mainly from a tracking, recognition, detection, and analytics standpoint. This type of new AI solutions can be used widely in different sectors.



**KODAK NEXFINITY Digital Press**

# Demand more. Deliver more.

The KODAK NEXFINITY Digital Press is an incredibly versatile cutsheet press that delivers a powerful combination of quality, consistency and cost.

The best quality. The broadest applications. All in one press that's engineered to make you money.

Find out more at [kodak.com/go/gcg](https://kodak.com/go/gcg)



24-26 May • Dubai  
**GULF PRINT  
& PACK 2022**  
[www.gulfprintpack.com](http://www.gulfprintpack.com)

Please visit us at  
booth #16



# KODAK NEXFINITY DIGITAL PRESS

Versatility that helps printers say “Yes”

Print service providers who can say “yes” to virtually any job today, are at an advantage. The KODAK NEXFINITY Digital Press puts printers in precisely that position. NEXFINITY stands as a compelling solution for printers seeking a robust, flexible, effective sheetfed digital color press. It delivers running costs competitive with medium-run offset and prints up to 400% more pages per month than competing sheetfed digital presses.

## **Raising the bar in terms of print quality and consistency**

The NEXFINITY Digital Press is designed for maximum throughput with production speeds up to 152 A4 pages per minute. It operates with unique same edge perfecting, which ensures best front-to-back and side-to-side registration of the printed sheets. Printing at 1,200 x 1,200 dpi in the Ultra configuration, the press leverages Kodak’s Dynamic Imaging Technology with 256 levels of density per pixel. Dynamic Imaging Technology automatically optimizes images in real time using proprietary computational screening algorithms that are applied as needed, even to small areas within images. Together, NEXFINITY’s high-resolution imaging system and sophisticated screening algorithms tighten control of dot sharpness, boosting quality and consistency over long runs. All these features enable NEXFINITY to deliver an excellent, consistent color print quality that rivals, or even surpasses, offset and helps printers increase customer satisfaction.

## **Profitable CMYK plus a wide variety of digital enhancements**

The press supports an exceptionally versatile range of substrate types, substrate thicknesses (max. 24 pt/610 microns) and sheet sizes (max. 356 x 1,295 mm when equipped with a long sheet deep pile feeder). It also provides an unmatched

range of digital print embellishment options in its fifth imaging unit. NEXFINITY owners can choose from more than twelve standard fifth imaging unit solutions for in-line digital print enhancements including specialty inks, plus custom spot colors and matte and gloss finishes. Among these diverse options are Red, Green and Blue as additional colors for expanding the color gamut; Dimensional Clear Dry Ink for tactile dimensional printing; Clear Dry Ink to give a fully or partially transparent topcoat; Gold Dry Ink for attention-grabbing gold effects; Metallic Clear Dry Ink, which achieves metallic effects such as silver, bronze and copper or simulates pearlized stocks; and Opaque White which delivers superior opacity in a single pass and enables stunning applications on transparent or colored substrates. With these unique imaging effects printers can enhance their customers’ communications and secure more high revenue jobs and with a 4x faster changeover of the 5th imaging unit producing lower labor costs and increased sales while creating greater differentiation

## **Digital Front End for more job processing efficiency and optimized productivity**

NEXFINITY’s Digital Front End (DFE) utilizes the Adobe PDF Print Engine (APPE) and is designed to exploit the many features of the press with an intuitive interface that streamlines time to press. It features flexibility for being operated as a complete standalone prepress station, with imposing, trapping, color management, job specification and job management and reporting capabilities. Furthermore, the DFE supports an automated workflow using JDF and JMF which are compatible with a variety of workflow solutions, including Kodak’s industry-leading PRINERGY Workflow. Fast ripping of short-run, image-intensive applications, as well as complex variable jobs keeps the NEXFINITY Press highly productive.

The optimal productivity and production availability of the NEXFINITY Digital Press are additionally achieved courtesy of the Operator Replaceable Component model, which empowers a printer's staff to maximize uptime by keeping the press in peak-performance shape and performing maintenance independently without waiting for a service engineer.

These NEXFINITY capabilities produce the most extensive range of high-quality, highly customized jobs. Typical applications for the press are marketing collaterals (brochures, sales kits, business cards), direct mail (mail collateral, postcards, transpromotional documents), short run publishing (books, manuals, coffee-table books), photobooks, calendars, catalogs, manuals, POS materials (signs, counter displays, shelf tags, end caps) and even packaging (folding cartons, labels). And thanks to NEXFINITY's enormous versatility, printers can respond to new market trends and increase their sales at any time by adding more applications to their portfolio.

#### **How printers notch up successes with the NEXFINITY Digital Press**

NEXFINITY makes a perfect complement for offset printers and/or digital service providers who want to extend their portfolios with high margin, creative applications and offer a quicker service, as users specializing in different areas have confirmed. Impressions Printing, for

instance, recently became Canada's first print shop to introduce a NEXFINITY Digital Press. When questioned about his reasons for choosing this particular press, Cory Stuart, President of Impressions Printing, replied: "We were searching for a solution that could help us further differentiate on speed and quality, and NEXFINITY has allowed us to increase our output volume while enhancing customer satisfaction".

In Germany, calendar producer Eckenfelder has shifted a significant share of its print volume from offset printing to the NEXFINITY Press. Managing Director Daniel Eckenfelder says: "We want to be capable of producing everything in digital, with no technical restrictions to constrain us. We were looking for a press that can take the place of offset. With NEXFINITY, practically anything goes and it's an exceptionally smooth-running digital press."

And at L & D Mail Masters of New Albany, Indiana, the NEXFINITY has resulted in a huge leap in printing capacity. "The main reason we switched to Kodak is reliability, in terms of both color and uptime. We're running the NEXFINITY Press 24 hours a day and it's performing extremely well," comments the company's President and CEO Diane Fischer. "We run anything from 60 lb. text up to 110 lb. text, and cover stocks ranging from 80 to 110 lbs. The flexibility of this reliable workhorse is really unbelievable."



# INSIGHT: KODAK ASCEND



## Randy Vandagriff Senior VP - Print, Kodak on the new Digital Press

### **What considerations led Kodak to develop the ASCEND Digital Press?**

Kodak observed a gap in two industry verticals: retail/POP signage and packaging. In the retail signage space, producers are using large format UV inkjet systems, which are both slow and expensive to produce lighter weight smaller signage and POP displays. In packaging production, folding carton short run prototypes are printed using small commercial presses, which lacked the robustness for real production, while larger digital production devices lacked the embellishment abilities of the smaller presses, leaving a gap.

Kodak developed the ASCEND Digital Press as the perfect solution for commercial printers and digital service providers who want to boost their profitability and capitalize on new business opportunities in the growing retail/POP and packaging markets. ASCEND's industry leading substrate handling and embellishment ability allows high margin specialty work in these market segments.

### **Please give some examples of print jobs that are perfect for the ASCEND Press.**

In the retail/POP area, the ASCEND Digital Press is an ideal solution for the production of retail signage with sizes of up to 48 inches (120 cm) in length at speeds 5280 ft<sup>2</sup>/hour (572 m<sup>2</sup>/hour). Packaging jobs for which the machine

is ideally suited are, for example, small folding carton boxes, blister cards, food boxes and belly bands. The press can also show its strengths of combining high-quality printing and in-line print embellishment in the production of commercial jobs, such as book covers, greeting cards, trading cards to name a few.

### **Sheetfed offset printing traditionally predominates in the folding carton sector. For which folding carton applications is the ASCEND Press a replacement or an ideal complement to offset?**

ASCEND is an ideal complement for many printing technologies. The press can produce complex folding carton prototypes and short runs in fewer steps than most other technologies. This reduces turnaround times not only of short runs but also for longer offset runs by reducing the design phase and removing ambiguity by producing real physical samples.

### **What are the main advantages of ASCEND over other printing presses and systems currently used for short run digital packaging printing and POP signage?**

The ASCEND Digital Press not only leverages its flexibility of inks and substrate handling, but it is also built on an extremely robust platform capable of reliable high quality long run production of millions of impressions per month, setting it apart from other specialty machines.



In addition, ASCEND has a larger imageable area than most devices in its class allowing for printing the complex marks most retail signage finishers and packaging converters require. This opens up a range of finishing options without sacrificing usable printing area.

**Why is ASCEND's toner-based technology better suited for the intended applications than an inkjet solution?**

ASCEND's electrophotographic (EP) technology enables many more embellishment opportunities than comparable inkjet solutions in the market. Printers can therefore use the press to produce a wider range of highly profitable signage and packaging applications in a single pass.

**What are the main differences between your NEXFINITY and ASCEND Digital Presses?**

The KODAK ASCEND Digital Press features a new oil-less imaging system, which facilitates the use of heavier substrates up to 762 microns/30 point, two-sided (duplex) printing on synthetics and the application of new embellishment inks. This feature also ensures a better lamination and gluing performance of ASCEND's output.

The KODAK NEXFINITY Digital Press continues to lead the industry in CMYK A3+ electrophotographic printing speed as well as five color options and speeds. In addition, NEXFINITY plays in a class of its own in terms of substrate types as well as sheet sizes and substrate thicknesses flexibility.

**What can be achieved with the new KODACHROME Foil Dry Ink?**

ASCEND's KODACHROME Foil Dry Ink allows foil and CMYK to be applied in one pass, resulting in higher productivity. Printed sheets don't have to go through the press a second time for getting foil as they have to with competitor's methods. This also means an end to registration problems while allowing features traditional foil stamping cannot, like variable data printing and designs too intricate or costly for traditional foiling die creation.

**What other print embellishment options available for ASCEND are relevant for retail/POP and folding carton applications?**

The ASCEND Digital Press has Opaque White, Clear, Dimensional, Anti-Microbial, numerous Pantone inks and an ever growing line of additional specialty inks. These inks can be placed in the first, second or fifth imaging unit of the press. This flexibility enables ASCEND to meet production requirements for different ink sequences.

**Can sheets printed and embellished on ASCEND be further enhanced by means of film lamination or spot or full area coating?**

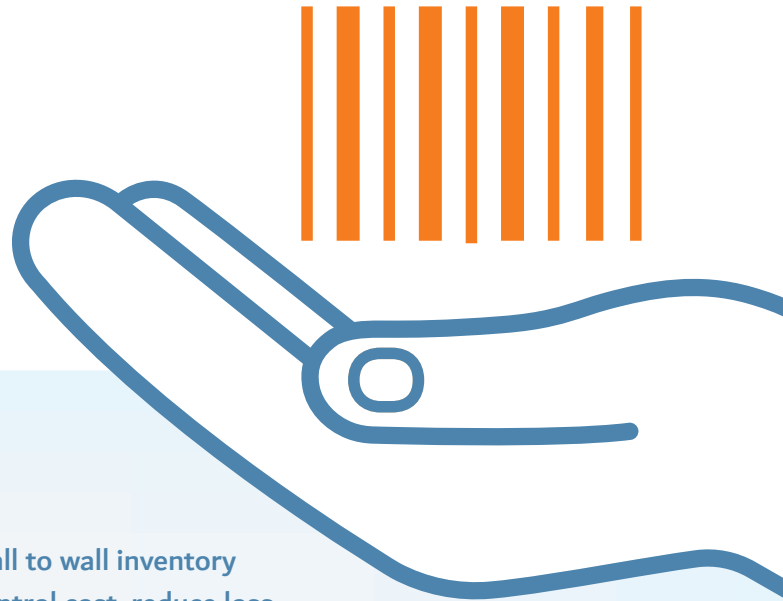
Thanks to its Oil-Less Dry Ink imaging system, the ASCEND Press supports additional lamination and coating/varnishing of the printed sheets as well as glues for the packaging industry.



# mojodat

## Asset Lifecycle Management Solution

Trusted by hundreds of customers in 15 countries, Mojodat offers innovative and reliable enterprise fixed assets management software to help you run and control the physical assets in your organization.



### THE BARCODE ARMY

Our team will study your current fixed assets scheme, conduct gap analysis design new operating procedures, generate asset classification structure, implement asset tagging and barcoding.

- > Wall to wall inventory
- > Control cost, reduce loss
- > Accurate asset register
- > RFID/Barcode technologies
- > Cutting edge mobile app

### SOPHISTICATED OPERATIONS, SIMPLE SOFTWARE

Barcoding is only half the battle. You need an asset management software that can do individual asset tracking, manage the financial details of depreciation, maintenance, capitalization and attribution.

- > Manage full asset lifecycle
- > Financial treatment
- > Maintenance module
- > Comprehensive reports, dashboard
- > 3<sup>rd</sup> party integration (Oracle ERP, SAP, AX, ..)
- > Smart dash board



Mojodat Fixed Assets  
Mojodat Maintenance  
Mojodat Inventory



Proudly serving clients in Saudi Arabia, UAE, and across the GCC. Check our website at [mojodat.transtek.com](http://mojodat.transtek.com) or email us at [mojodat@transtek.com](mailto:mojodat@transtek.com)

Mojodat is a product of Transtek Systems.

# SHORTAGES IN THE ERP SYSTEM WHEN MANAGING FIXED ASSETS

An Enterprise Resource Planning System (ERP) is a crucial part of an organization's management structure, especially with fixed asset management processes, yet countless businesses worldwide struggle to implement one that meets their financial and management demands perfectly. Moreover, hundreds of these ERP systems are available on the market but for many reasons, when these systems are applied they don't provide adequate features when managing fixed assets.

**How are these ERP systems failing fixed asset management and how can Mojodat's complete asset lifecycle management solve these ERP shortfalls? We tackle those important points below.**

## **A Shortage in Enterprise Resource Planning Systems (ERP) with Fixed Assets**

In ERP, when an asset composed of several parts is considered as one in financial terms, it is not easy to manage that assets' parts. Assets can have more than one barcode as well. In fact, this is a main shortage in the ERP System for fixed assets. It requires another high-tech, fixed asset software, like Mojodat.

Mojodat fixed asset management software manages composed asset-parts and links them with their related assets in the ERP's financial register. This can be managed from mobile applications as well, giving more control to the asset manager. Mojodat can complete the asset's life cycle management in the ERP through the following functions:

### **1. Native Mobile Applications**

Sync data with ERP automatically with cutting-edge mobile and handled applications. Mojodat allows you to complete all physical treatments online or offline with both RFID technology and regular barcode labels. Mojodat fixed asset management software provides various functions such as asset receiving, new asset tagging, asset transferring, custodian changing, asset auditing, and counting and barcode label changes.

### **2. Smart RFID Tracking**

Mojodat tracks asset movement using RFID

gate sensors and reports movement history. It also activates an alarm if there is unauthorized movement in real-time. These functions are added values that complete the asset life cycle management in the ERP system.

### **3. Receive the Assets from Procurements and WIP**

A gap between receiving assets in the inventory and its capitalization must be bridged. This is completed through a fully integrated application with the receiving function in the ERP. Mojodat is that bridge and recognizes the asset from the Delivery Note lines. It also reads the data of the asset automatically. It handles asset data in a staging area to generate corresponding asset cards. Moreover, it creates the related composition information (parent-child relationship) when required. After that, the user can keep the asset records in Mojodat and perform all the tracking operations. Once the asset's financial data is ready, Mojodat can push the up-to-date asset records to an EBS Fixed Asset Financial Register. It uses a Post Mass Addition function to achieve that.

### **4. Approvals Workflow**

Mojodat fixed asset tracking software provides a flexible workflow approval for Transfers and Disposals. The approval workflow can be configured as per a combination of the asset location and category.

### **5. Custody Management**

With the custody management function, Mojodat can integrate with the LDAP or any active directory. The user can manage the employees' custodies.



## 6. Controlling Access to Data

For distribution companies, granting access to all asset data and transactions to one person just isn't feasible. With Mojodat, clients can segregate access to the asset data per branch or department. Thus, users can generate reports and perform transactions on only the assets for which they are responsible.

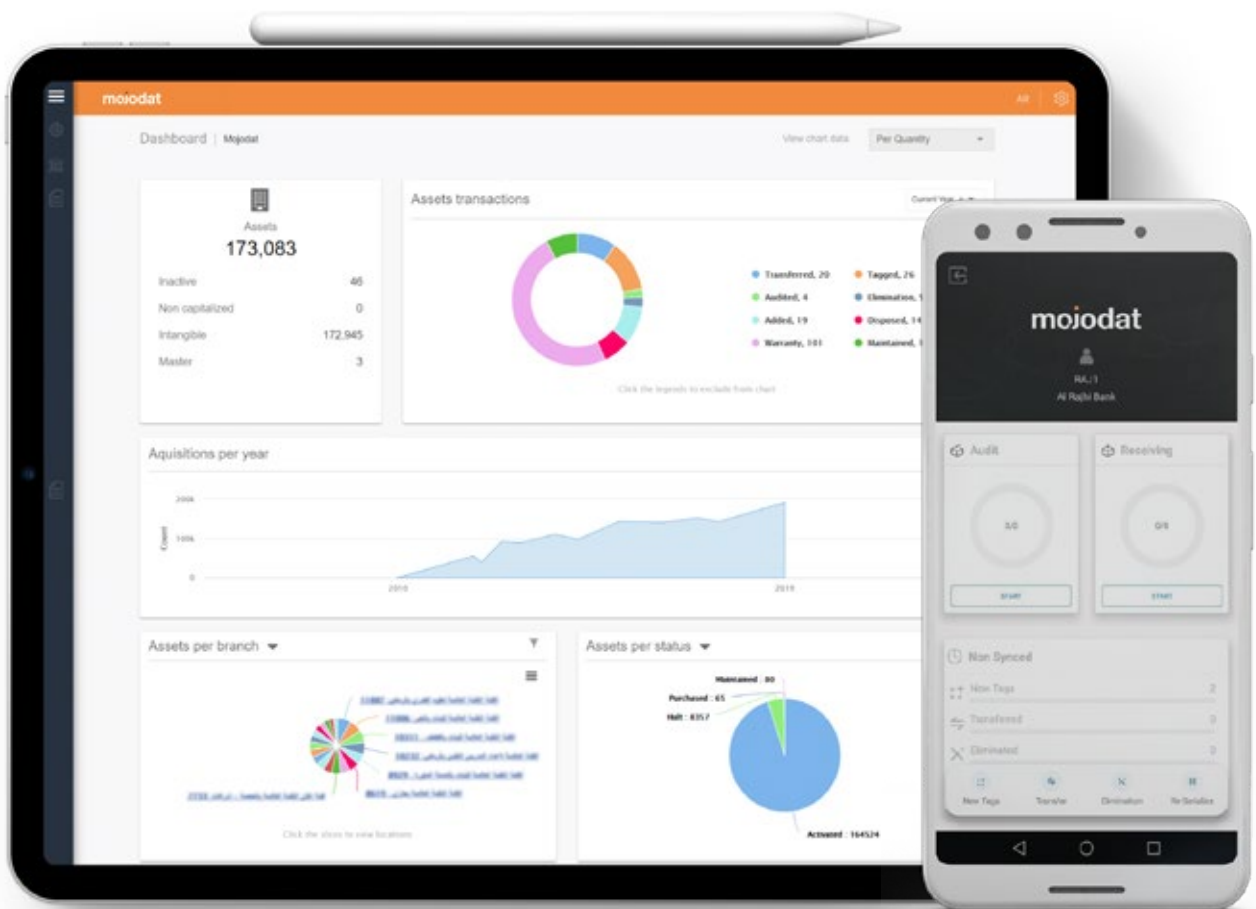
## 7. Manage All Assets Types

Mojodat manages and tracks intangible assets and non-counted assets by generating virtual tags in addition to trackable items (non-capitalized assets) and non-owned assets using barcode tags.

## 8. Employee Portal

The next version of Mojodat will provide an employee portal which any employee can access to request assets, then the requests will be run through a workflow approval. If accepted, this will trigger a transfer transaction or a purchase request.

In short, fixed asset management is a sophisticated process that an ERP alone can't achieve perfectly. Successful fixed asset management requires another multi-functional system to complete the life cycle of asset management. Mojodat was developed to fulfil this requirement.



# INTERVIEW WITH HUSAM

## Husam Khaskieh CEO, Transtek Systems

### **Can you tell us a little bit about Transtek?**

Transtek Systems is a UAE software company, founded in 2000. It has since been supporting small, medium and enterprise corporate and governmental organizations across the MENA region in their digital transformation by solving their pain points with a wide range of innovative software solutions. One of these solutions is built upon a flagship digital product - Mojodat Platform, which contains Mojodat Fixed Assets, Mojodat Maintenance, and Mojodat Inventory.

### **RFID vs Barcode: Which is best for Asset Tracking?**

RFID Technology is an automatic identification and data capturing method and stands for Radio Frequency Identification. It uses radio waves to transmit product identification data from a circuit on an asset to an antenna. RFID may seem similar to classic barcode tags as organizations efficiently use both of them as part of their inventory tracking workflow. However, RFID is the superior choice that adds more control to your fixed asset management.

An added advantage of RFID tags is that they do not require a direct line of sight, unlike barcode tags. That means the asset management applications can read multiple tags at the same time, which is extremely useful with bulk asset tracking. Tracking the movements of the asset automatically is also made a lot easier using the RFID sensors on gates.

### **What does the future of IoT-Enabled Asset Management Solutions look like?**

The Internet of Things (IoT) and asset tracking are fundamentally linked to one of the



most promising applications-areas of asset management. By utilizing IoT sensors, companies can actively track specific information about their assets without any human involvement. This also includes information about the environments in which the assets are stored or transported. And because these IoT sensors can be attached to assets themselves instead of tags, the providence of their whereabouts can be verified absolutely.

IoT-enabled asset management solutions such as Mojodat provide companies with basic key benefits. As for those who are looking to develop their businesses, these innovative software solutions are the most relevant. In fact, IoT-enabled asset management promises to be the smartest technology that enterprises worldwide will utilize for years to come.

### **Can we manage the fixed assets from the ERP system?**

Hundreds of organizations worldwide struggle to implement the perfect Enterprise Resource Planning System (ERP) that meets all their financial and management demands. Yet it is crucial, especially concerning fixed asset management processes. Moreover, hundreds of

these ERP systems are available on the market. However, for many reasons, the systems applied don't provide adequate features when managing fixed assets.

Mojodat was created to cover the gaps in the ERP system and to give fully end-to-end features for Asset Lifecycle Management, it can be integrated with any ERP system with two-way integration to present full data pertaining to an asset.

### **What are the key features of a successful Asset Management Solution?**

The key features for a successful asset management solution are maximized asset value and utilization. Consider what you want from your new system. If you already have one, list its strengths and weaknesses, ask yourself and those who will use your new system what they need it to do. What do you want your new system to

accomplish? What are your objectives? Even if you don't have one yet, perform a similar exercise pinpointing what you want from a system. Here are some questions you might want to consider:

- Does your considered system utilize the recent technology for the web or cloud architecture?
- Does it contain a native mobile and handheld application and manage all kind of barcode and RFID technologies (for future expansion)?
- Can it manage your entire inventory on Asset Level?
- Is it automated enough to just rely on simple data entry, or will it need extra manpower? Is it integrated with your ERP and other systems you have?
- Does it contain a full physical treatment and control of the assets?

## FEATURED PARTNERS



Titan **Workspace**



**DATWYLER**



 **Transtek**





**Business Made Easy**

*we'll show you how*

**ABU DHABI OFFICE**

T : +971 2 201 4999,  
F : +971 2 645 6483,  
PO BOX: 47257,  
Shaheen Tower Building,  
Abu Dhabi, UAE

**DUBAI OFFICE**

T : +971 04-528 1000,  
F : +971 4 239 4566,  
PO BOX: 25940,  
Makeen Building, Airport  
Road, Dubai, UAE

**MUSCAT OFFICE**

T : +968 2 411 1500,  
F : +968 2 411 1500,  
PO BOX: 1718,  
PC 130 Azaibha Pearl Tower,  
Muscat, Oman

**RIYADH OFFICE**

T : +966 55 868 2818,  
F : +966 11 473 4521,  
Riyadh-Al Sulimaniah  
Prince Mamdoh Bin Abdul  
Aziz Street, Al Safwah Trading  
Center Office No. 72

[www.gcg.ae](http://www.gcg.ae) | [info@gcg.ae](mailto:info@gcg.ae)

